

Before operating this unit, please read this manual thoroughly and retain it for future reference.

User's Manual

GKB Viewer-10

Making Security Easier.



Table of Content

1.	LOGIN (SETUP)	2
1.1	Login account source	2
1.2	Login Scheme	4
2.	ICON EXPLANATION	5
3.	LIVE VIEW	6
4.	PB FROM SERVER	8
4.1	Remote playback source	8
4.2	Introduction to playback interface	9
5.	DOWNLOAD RECORDING	10
5.1	Camera download settings	10
5.2	Download management	11
6.	PB FROM LOCAL	12
7.	LOCAL SETTINGS	13
8.	CAMERA ATTRIBUTE	14
9.	AVI CONVERSION	15
10.	OTHERS	16

Viewer-10 is for client side. It can construct an independent C/S system with IP cameras and Dserver, it can also construct an independent C/S system with NVR.

1. Login (Setup)



The screenshot shows a 'Login' dialog box with the following fields and options:

- Account: gkb
- Password: (empty)
- Server IP: Taiwan1 (dropdown menu)
- Port: 3478
- Remember password:
- Exchange login servers:
- Buttons: Login, Cancel

Input account, password, server IP and port. Then click on "Login".

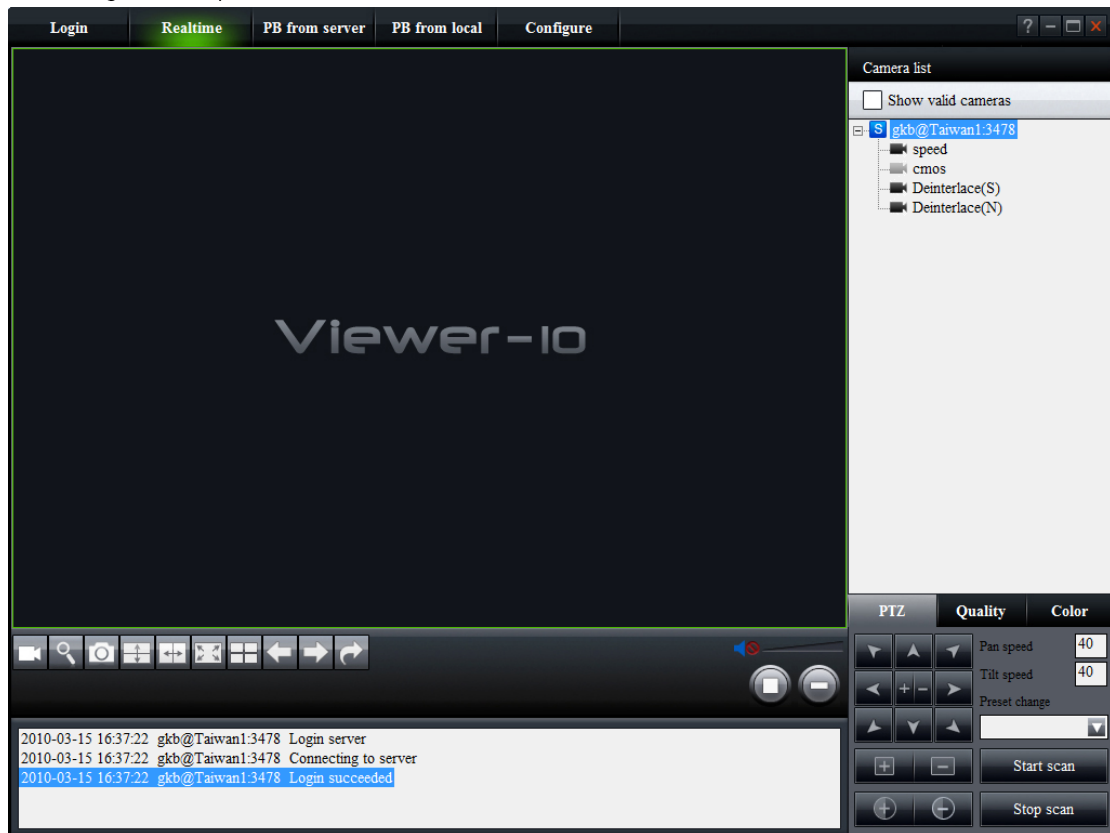
1.1 Login account source

There are different source for login account:

- 1、 The account is created in NVR. Port is set in the "port of media server" of NVR. Server IP is the same at the local PC IP address. If that is not public IP address, you will need to do port mapping.
- 2、 The account is registered on the server. The default server is "Taiwan1", port 3478. For this account can also be used through internet www.cloud-nvr.com (For example, you can login www.cloud-nvr.com with account and password, gkg/gkb. You can also login viewer-10 with gkb/gkb ,server IP "Taiwan1", Port 3478)
- 3、 You can login single IP Cam directly. The default account is guest. Password, server IP, and port are set in the "Network" of Setup.

You can login multi servers at the same time. If "exchange login server" is checked, the previous login server will be logout. If not checked, you can login multi servers.

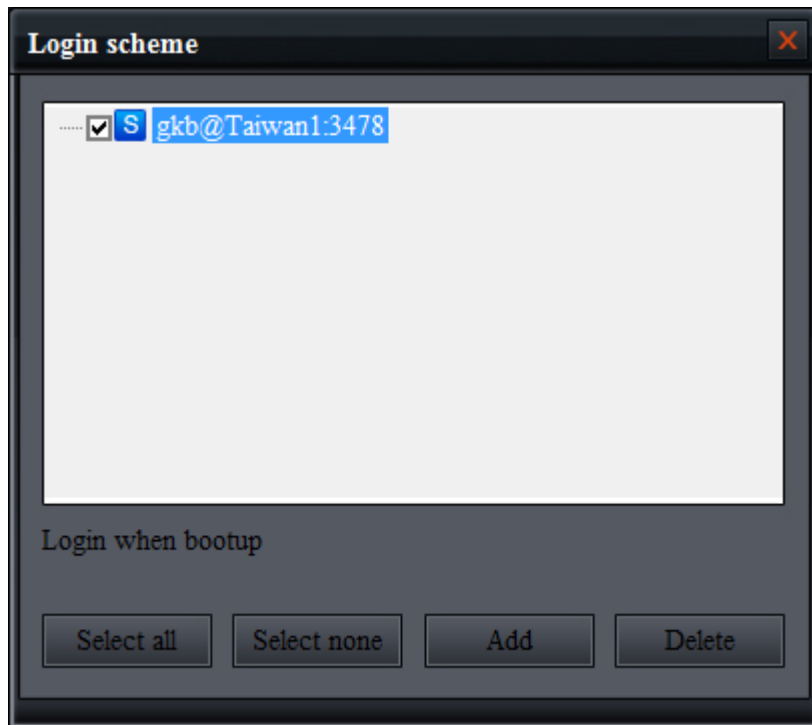
After login, you can do live view, remote playback, local playback, and download recording remotely.



Cameras and server information will be showed in the message window of Viewer-10.

1.2 Login Scheme

In order to make login easier, you can save the login information. Click "Configure", and select "Login Scheme" in the drop-down list.











Click "Add" to add the accounts you want to save, check that account to enable automatically login when bootup.



If "Login simultaneously" is checked, the account will be login immediately.













2. Icon explanation

The camera status icon in the camera list:

-  Logout server
-  Login server
-  Connecting to server
-  Error while login server
-  Camera groups
-  Normal status
-  Live view status
-  Not available or offline

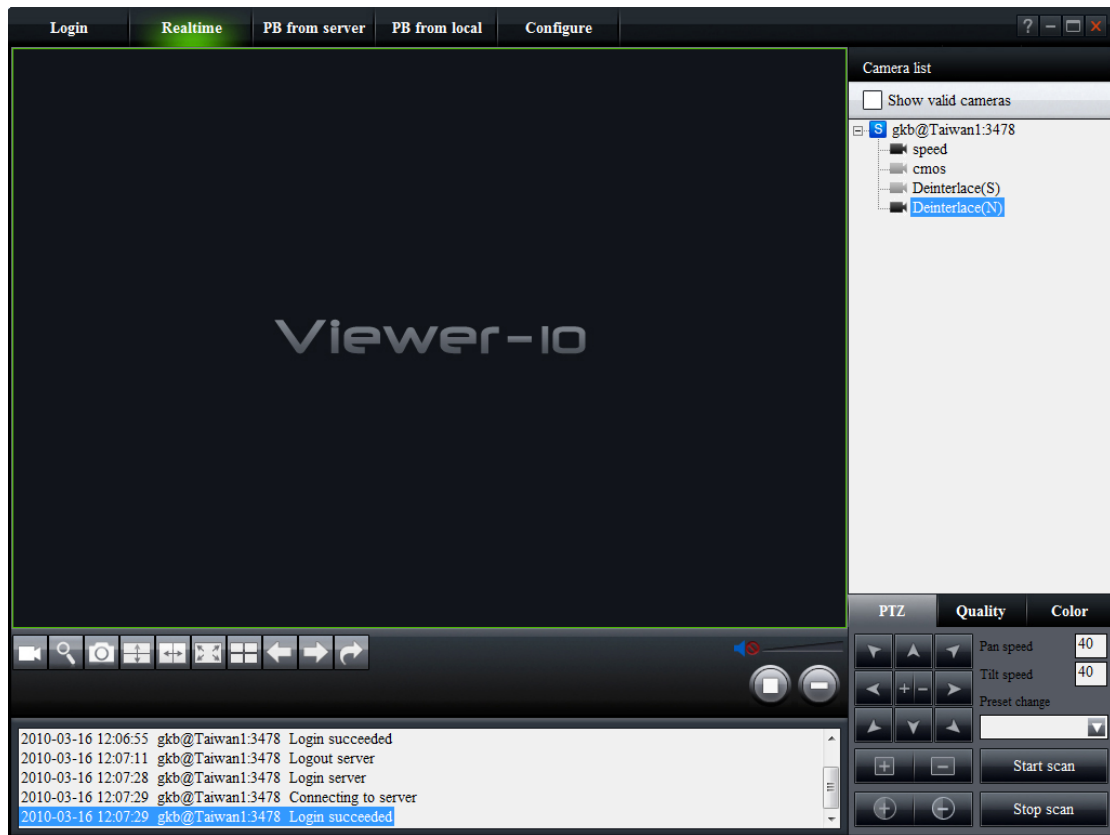
Icons on the main interface:



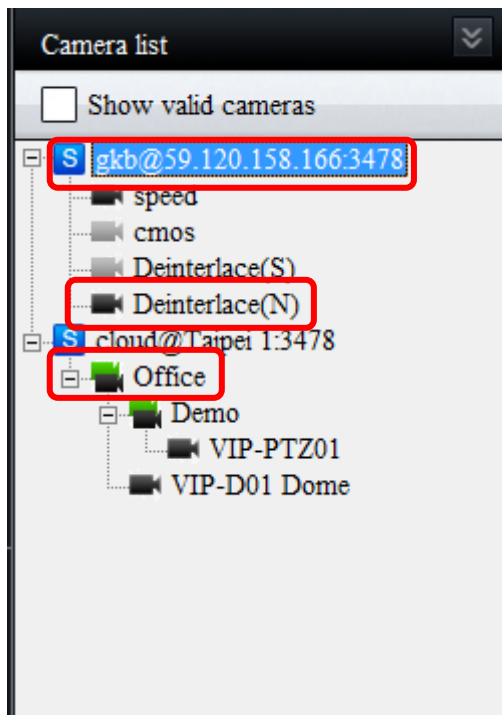
-  : Start to record. You can record to your local computer while live view or remote playback.
-  : Enable Preview mode. Under preview mode, there is one picture per second. This can save computer performance.
-  : Snapshot. You can set manual or auto snapshot in "Local settings"
-  : Image vertically reverse
-  : Image horizontally reverse
-  : Full screen. Preen ESC to end full screen.
-  : Display window in different channels
-  : Last page. Monitoring last page in display window.
-  : Next page. Monitoring last page in display window.
-  : Auto flip. Auto flip page in display window. You can set auto flip rate in "Local settings".
-  : Stop. Stop chosen live view or playback camera.
-  : Stop all. Stop all live view or playback camera.

3. Live view

After login server, click "Real time" to play live view mode.




You can drag the camera from the camera list to viewer window, or double click the camera to play it.

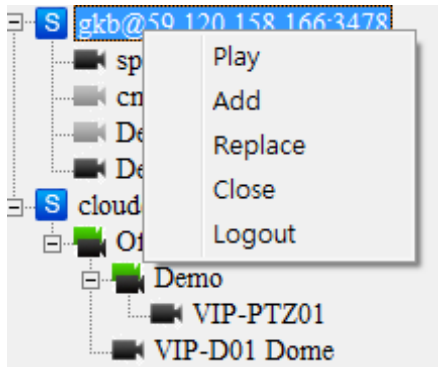


- 1、 Right click on the account name, you can choose to play all the cameras under that account.
- 2、 Right click on the group name, you can choose to play all the cameras under that group.
- 3、 Right click on the camera, you can choose to play that camera only.

You can close the camera in the same way.

You can drag the video image to camera list, or click  to stop the video.

Right click manual:



Right click manual of the account:

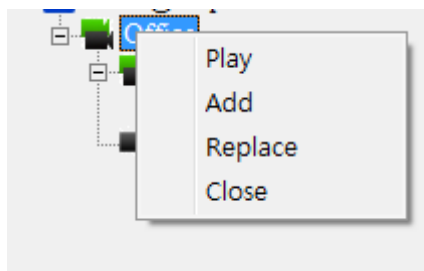
Play: Play all the cameras under this account. It will not change screen layout.

Add: Play all the cameras under this account. It will change screen layout.

Replace: this will close current live view video and play chosen camera. This will not change screen layout.

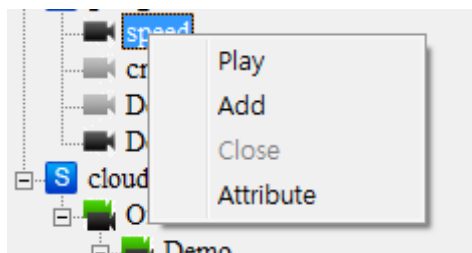
Close: Close all the playing cameras under this account.

Logout: Logout server



Right click manual of the group:

The same function as above.



Right click manual of the camera:

The same function as above.

Please refer to camera attribute for more information.

4. PB from server

4.1 Remote playback source

There are four sources to do playback, NVR recording, server recording, SD card recording,, NAS recording.

Icons on the playback camera list:

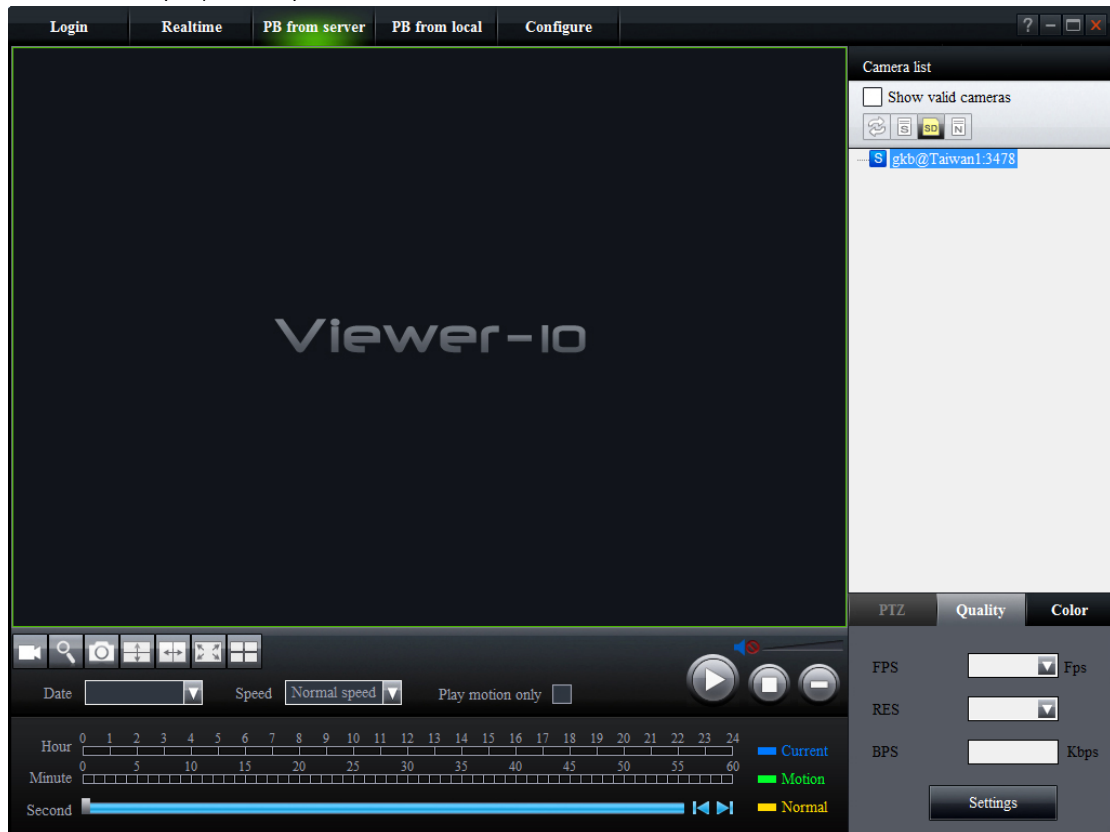
 : Auto playback from NVR

 : Playback from server

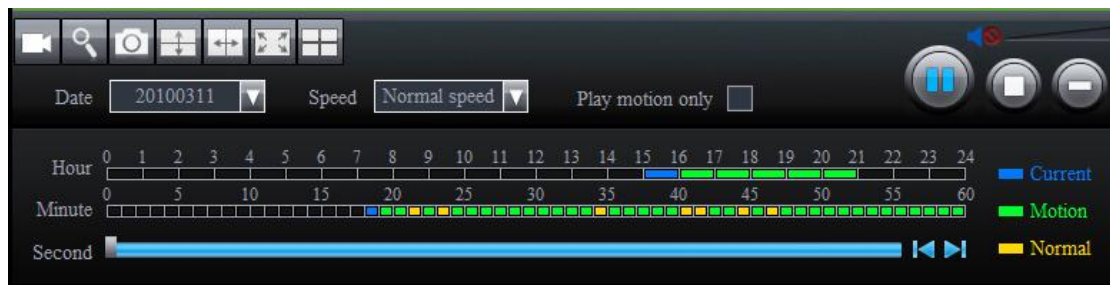
 : Playback from SD card

 : Playback from NAS

You can playback up to nine channels at the same time.



4.2 Introduction to playback interface



Play motion only : if the camera has motion detect setting, there will be recording whenever there is motion event. No matter one channel or multi channels can choose play motion only.

Speed : Choosing playback speed, 2x, 4x, 8x, 16x, 1/2x, 1/4x, 1/8x, 1/16x

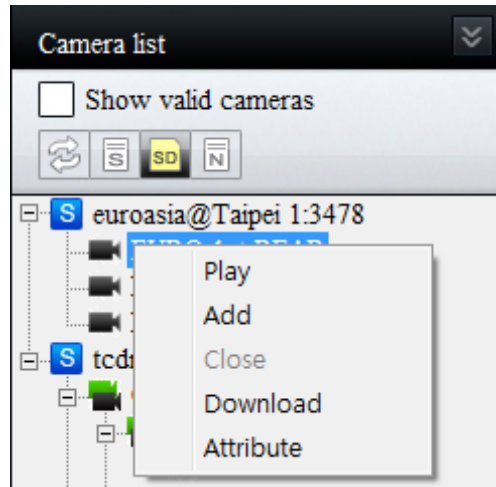
Current : Display current playback time

Motion : There is motion trigger at the specific time

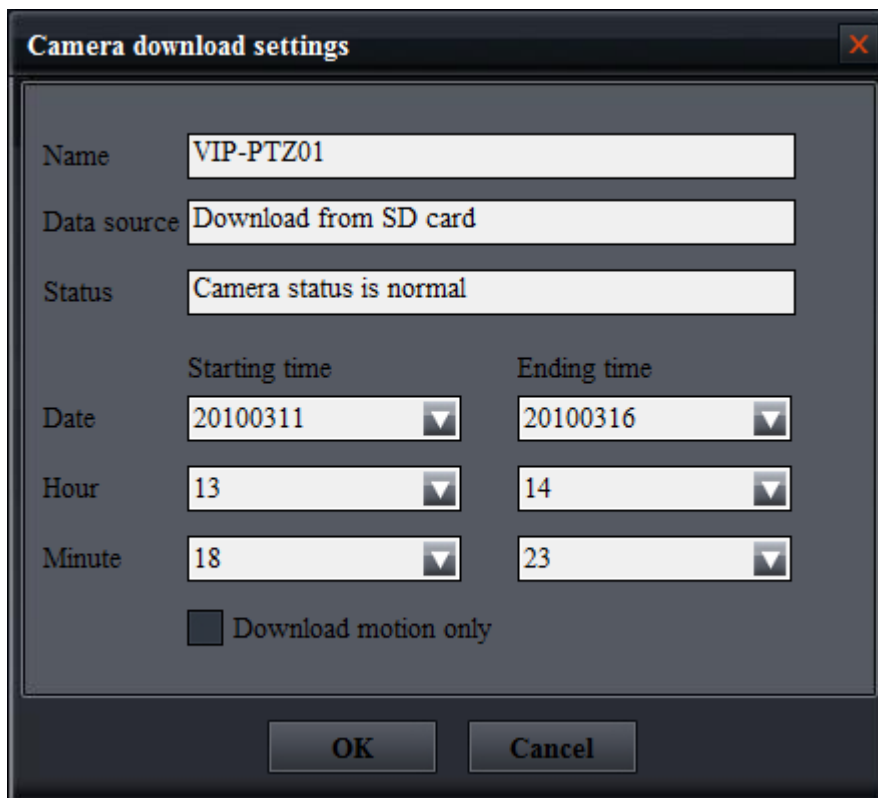
Normal : Normal recording

5. Download recording

In playback mode, right click on the camera, and choose "Download" to download recording.



5.1 Camera download settings



Name : Camera name

Data source : Source is chose from playback mode.

Status : Only online and downloadable camera is in normal status.

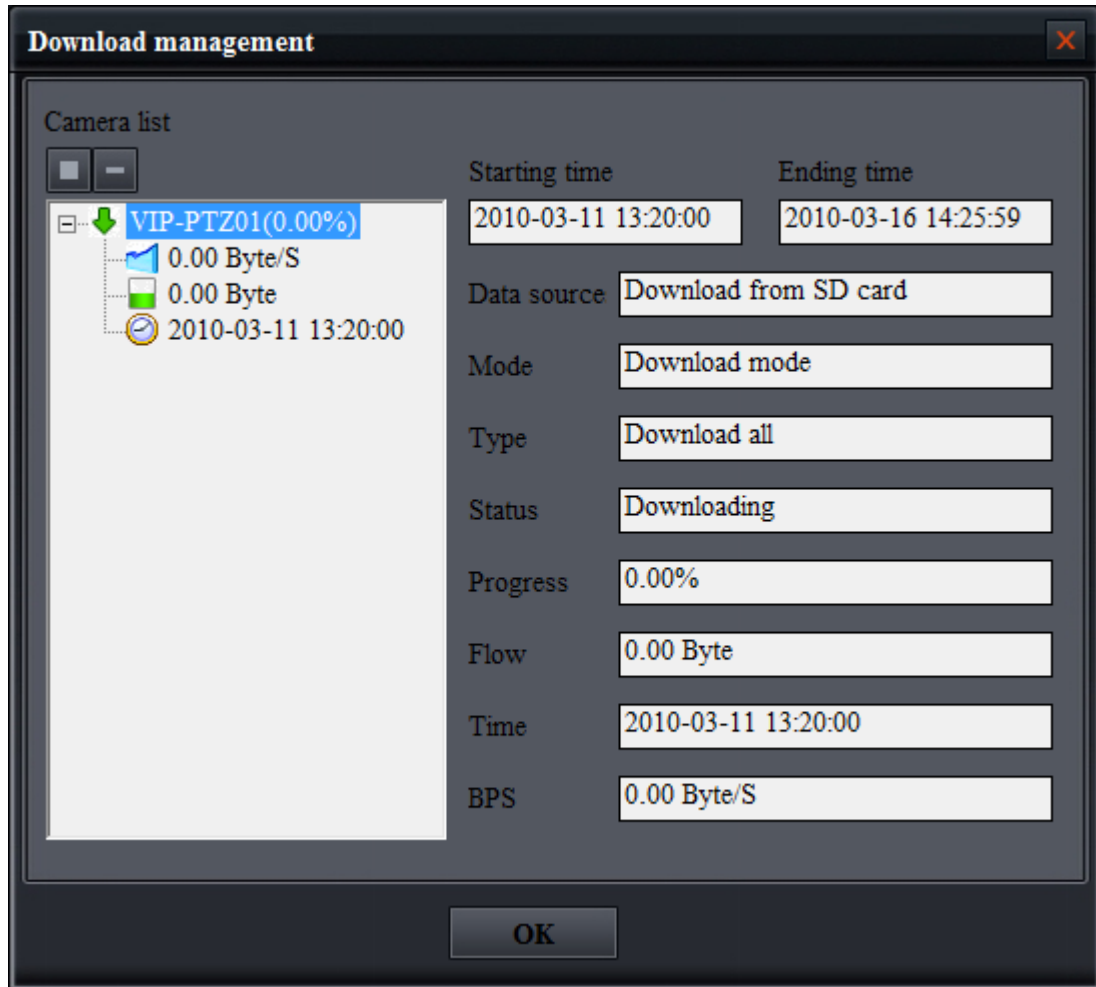
Download starting and ending time : Setting time for start and end downloading.

Download motion only : Check to download motion recording only.

Click "OK" to start downloading. *You can only stop downloading on download management. ◦

5.2 Download management

You can open "Download management" in the "Configure" or by right clicking on the downloading camera.



Click  to stop chosen camera. Click  to stop all cameras.

Download starting and ending time : Display starting and ending download time

Data source : Display download data source.

Mode : There are playback mode and download mode. Download from server and NVR will show playback mode, download from SD card or NAS will show download mode.

Type : There are download all and download motion only.

Status : After starting download, it will show downloading.

Progress : Downloaded percentage.

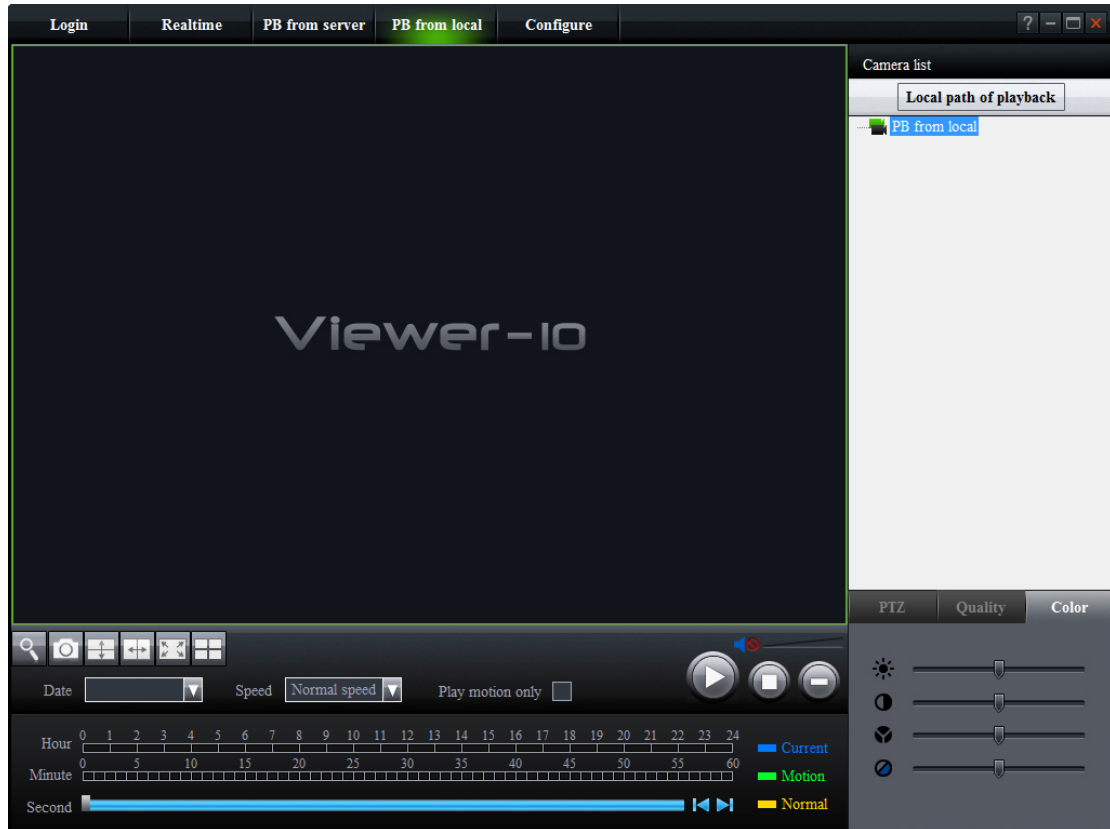
Flow : Downloaded data flow, the unit is MB.

Time : Current download recording time.

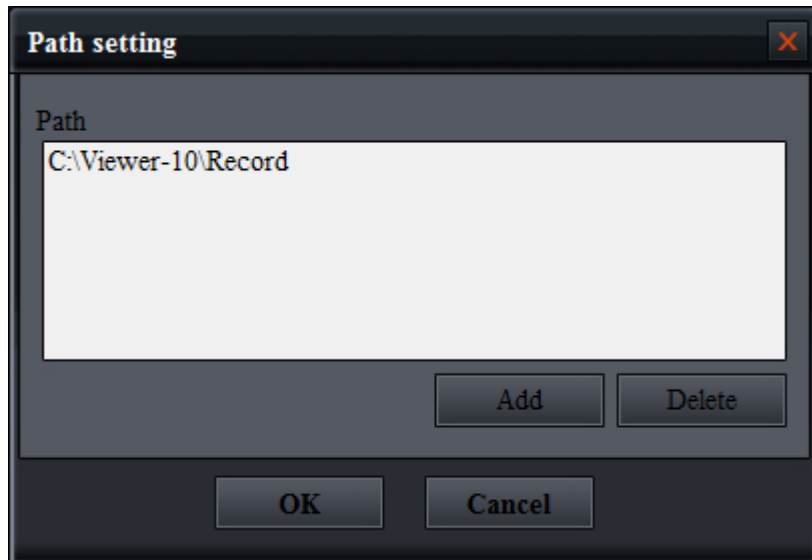
BPS : Download speed.

6.PB from local

Playback from local computer hard drive.

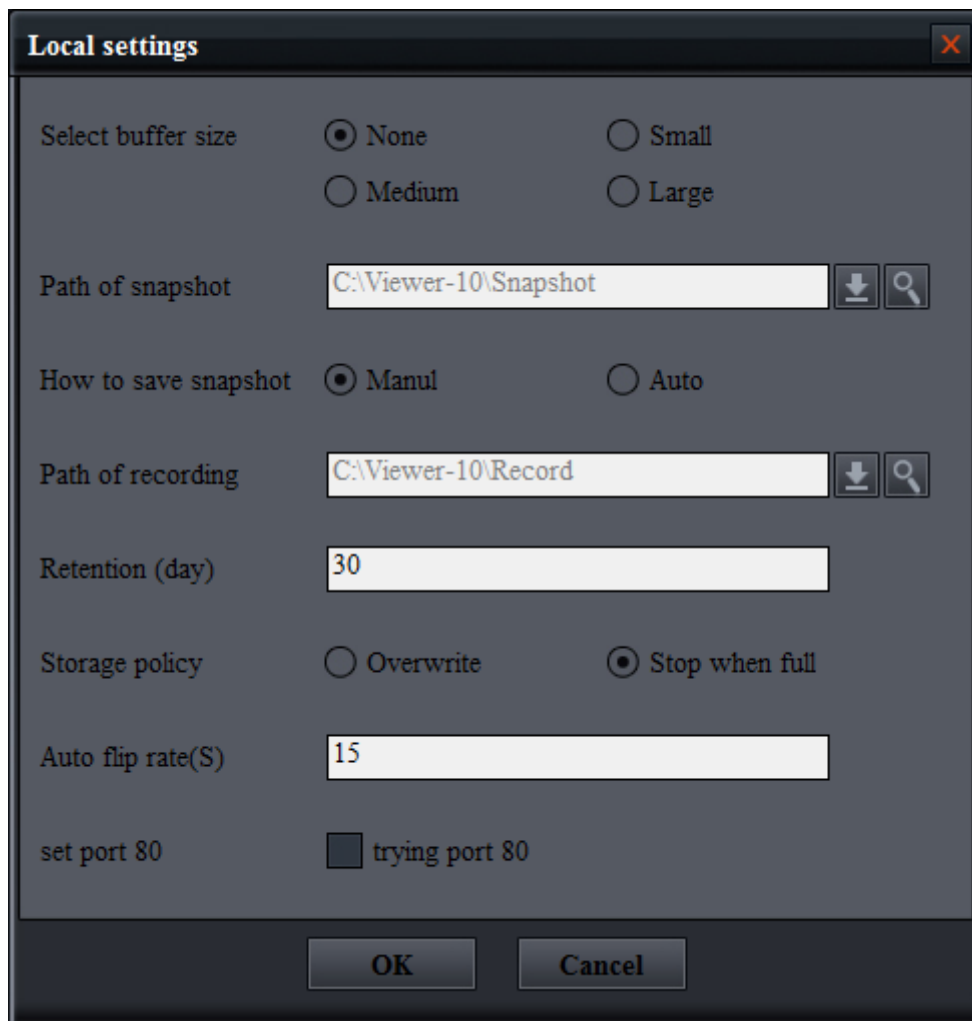


Click "Local path of playback" to enter path setting. Click "add" to add the recording path. It will search all the recording in the path automatically and show in the camera list.



To control playback from local is the same as playback from server.

7. Local settings



Select buffer size : Setting the buffer is to enhance the video playing continuity when the internet environment is not good, but the video will delay for a while. The larger buffer size you set, the better video playing continuity.

How to save snapshot : You can choose save snapshot manual or auto. The path of snapshot is the same for both manual and auto. Auto can be set when you would like to do consecutive snapshot.

Retention (day) : You can set how many days to preserve the recording. The video will record at the path of recording.

Storage policy : You can choose overwrite and stop when full. Overwrite will occur when the retention day is due or the hard disk is full. Overwrite is recommended.

Auto flip rate (S) : When playing live view, you can do auto flip and set the rate in second here.

Set port 80 : There is a port 80 in the camera. If you select trying port 80, the application will connect the camera through port 80 automatically. Other port will be invalid.

8.Camera attribute

Introduction to attribute on the right click manual of camera.

Camera attribute	
Event	Data
Camera name	Deinterlace(N)
ID	A6C123X29GOISU3
Type	7011C
Image eition	
Firmware	5.2.22
Boot Loader	7.3
Playing status	Realtime
Connection status	Camera online
Video quality	
FPS	10 Fps
RES	CIF
BPS	160 Kbps
Local statistics	
FPS	11.0 Fps
BPS	19.7 KB/S
Server message	
Public IP	59.125.22.187
Public TCP port	6510
Public UDP port	6510
Command connect message	
IP	59.125.22.187
Port	6510
Connect type	Connect by UDP
Media connect message	
IP	59.125.22.187
Port	6510
Connect type	Connect by UDP
Extention info	
Online	
PTZ supported	
Support downloading w...	

Up and down arrow : choose last and next camera

Image edition : This shows the camera firmware, playing and connection status.

Video quality : This shows the internet communication setting of the cameras.

Local statistics : This shows the actual FPS and BPS that camera use on the internet.

Server message : This shows the camera IP and port information.

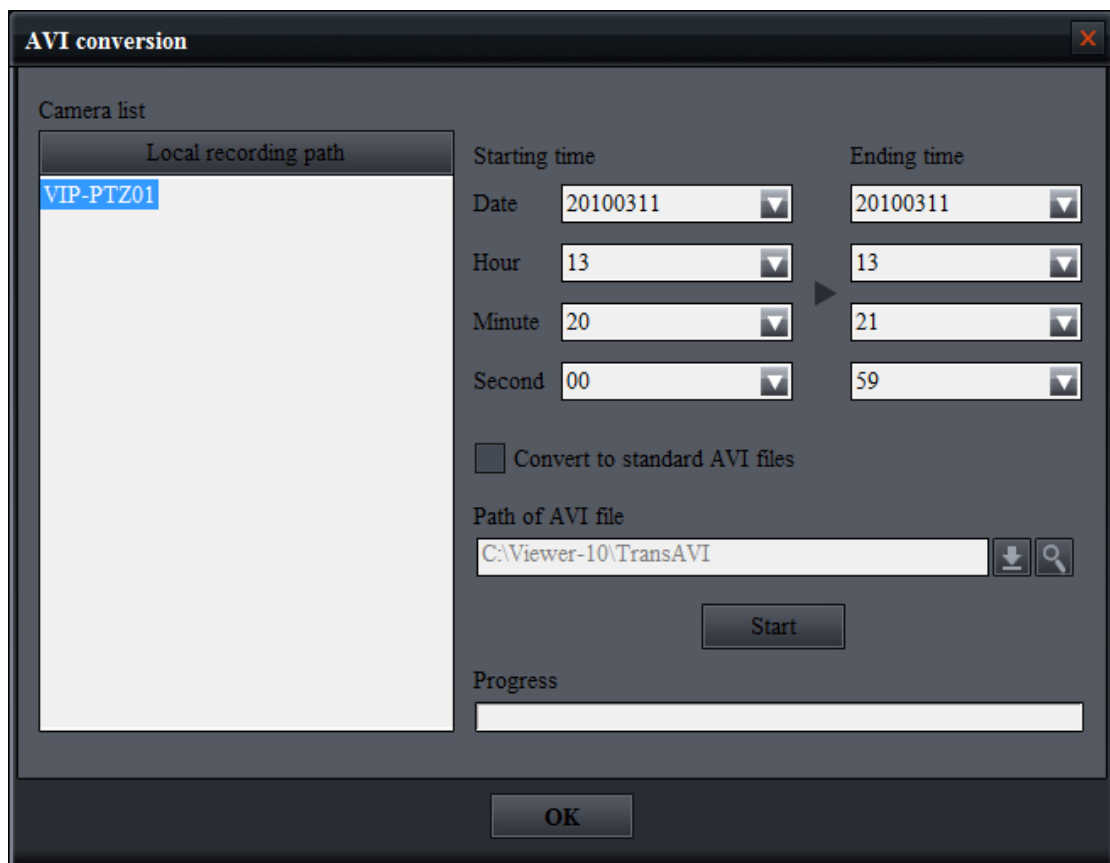
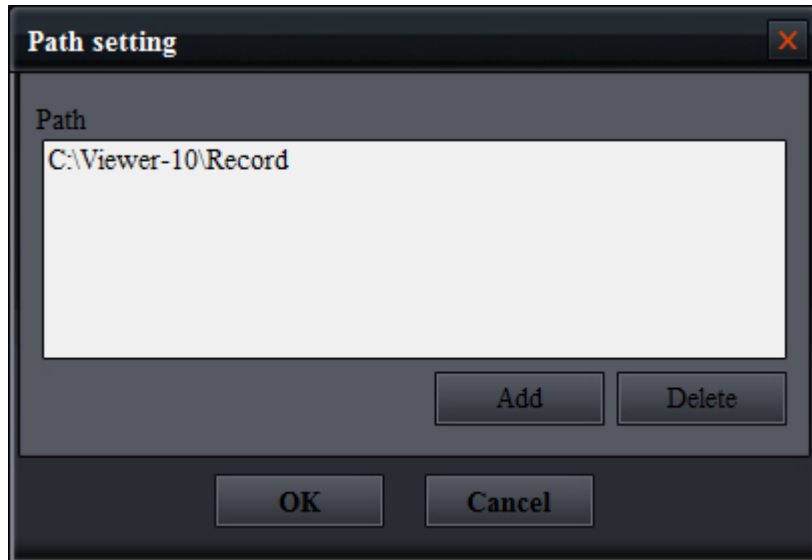
Command connect message : This shows the command stream information.

Media connect message : This shows the media stream information.

Extension info : This shows other information.

9.AVI conversion

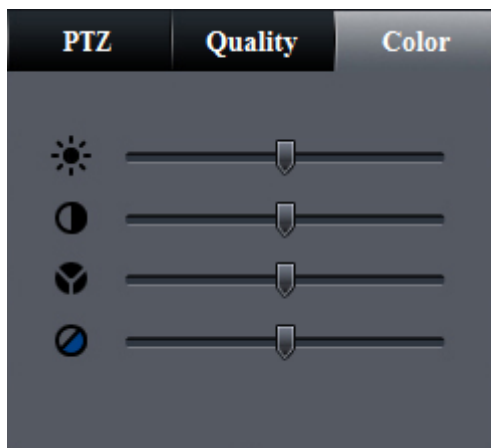
1. Click "Local recording path" to set the "Path setting". You can add all the paths which storage the recoding file. The application will search all the cameras recorded at that path automatically and shows in the camera list.



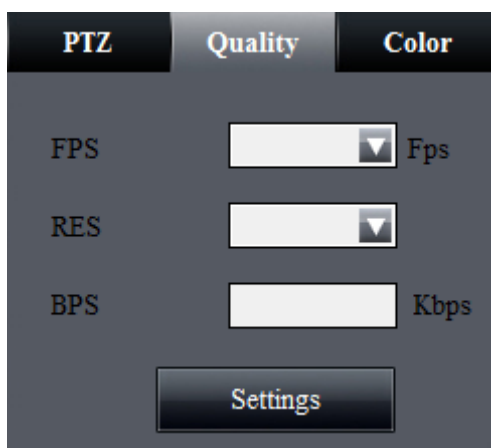
2. Choosing the starting and ending time.
3. Setting the path of AVI file and click "Start" to convert corresponding recording file to AVI file.

Convert to standard AVI files : Select this, the AVI file can be played with standard H.264 player after conversion, but there will be no time mark on the video.
The biggest file size of each AVI file is 2GB.

10. Others



1.  Adjust video brightness.
2.  Adjust contrast.
3.  Adjust hue.
4.  Adjust saturation.



1. FPS: Video image display for per second.
2. RES: Video image resolution.
3. BPS: Transmitted bytes. High video quality needs more bandwidth.




PTZ control: only when the camera has PTZ function, PTZ control is enabled.

There are eight direction control

 Zoom in/out

 Focus far/in

 Iris wide/narrow

If the camera has set preset function, you can start or stop scan here.

You can also set Pan and Tilt speed.