

Before operating this unit, please read this manual thoroughly and retain it for future reference.

## User's Manual

# GKB 108/109 Analog Camera

Weatherproof Dome Camera with  
Infrared and Fixed Lens



Making Security Easier.

**GKB** 



## About this Manual

This user manual is for use with the GKB 108/109 Analog Camera. This document contains important information and instructions detailing proper operation and maintenance of GKB 108/109 Analog Camera.

Be aware that GKB 108/109 must be installed and used in accordance with the instructions given in this manual. Before installing or operating the unit, please read all safety notes and warnings provided in this manual.

GKB 108/109 Analog Camera is a surveillance device for use in security systems that assist in the management of security. GKB is not liable nor can be held responsible for any material loss and/or personal injuries cause by robbery, fire, natural disaster or problems of any kind resulting from the use of this device.



Do not dispose this camera as general waste. This product must be treated as a recyclable product. Contact your local government recycling program or the supplier of the product to confirm the proper method of disposal.

# Contents

Warning and Precaution .....	5
Package Content.....	6
Product Overview.....	6
Features.....	7
Installation Instructions.....	7
Specification - GKB 108.....	8
Specification - GKB 109.....	9
Warranty Policy .....	10

## Warning and Precaution

### Warning

This information is provided to ensure your safety and to prevent loss either physical or financial. Read carefully before using the product. Read all sections of this manual where the following marks are shown.



Ignoring this may result in material loss and/or serious personal injury including death.



Ignoring this may result in material loss and/or slight personal injuries.



Do not disassemble

### Precaution



**Do not expose the camera to radioactivity and mount facing strong light sources.**

Exposing the camera to radioactivity or strong light over long periods of time will damage the camera's sensor.



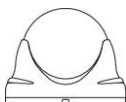
**Do not supply voltage higher than GKB 108/109 regulated voltage.**



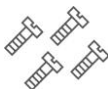
**Do not install the camera under unstable light conditions.**

Installing GKB 108/109 in environments with unstable light conditions may cause the camera to function abnormally.

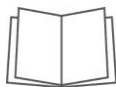
## Package Content



Dome Camera

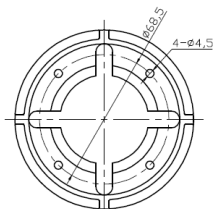
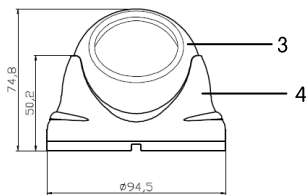
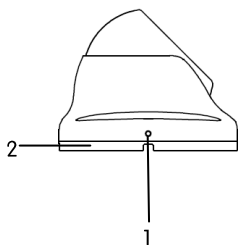


Screw Driver Pack



User's Manual

## Product Overview



## Features

- 1/3" Sony CCD , presents 550/420 TV lines of resolution.
- Min. illumination: 0.3 lx, F1.4 / 0.01 lx, F1.4.
- Smart IR Control, prevent over-exposure when object close to the camera.
- Cover full spectrum of bright light to no light surveillance, IR Distance is up to 20M.
- Tamperproof Construction.
- IP66 rated for extreme weather application.
- 3-Axis mechanical design, for both wall/ceiling mount.

## Installation Instructions

To connect the camera's power and video as the following.

1. Use the Hexagon wrench given in the package to loosen the screws(1) on both side of the outer housing, and disassembling the camera.
2. Position the easy mounting plate(2) at the desire location and fix it on the wall or ceiling.
3. Mount the camera body(3) and outer housing(4) to the easy mounting plate, turn clockwise and make sure the outer housing fully mount on the plate.
4. Adjust the camera angle so the lens can point in the desired direction.
5. Use Hexagon Wrench to tighten the Hexagon screws on both side of outer housing.
6. Connect the power supply jack to 12V DC of 500mA and the BNC Video Output to the desired video line.

\* It is highly recommended NOT to dismantle or take apart the camera since this will cause possible damage on the camera.

## Specification - GKB 108

<b>GKB 108 Analog Camera</b>		
Video	Image Sensor	1/3" Sony CCD
	Number of Effective Pixels	NTSC: 768(H)×494(V) PAL: 512(H)×582(V)
	Resolution	550 TV Lines
	Min. Illumination	0.3 lx, F1.4 / 0.01 lx, F1.4
	Gamma	0.45
	S/N Ratio	More than 48dB
	Sync. Mode	Internal Sync.
	Scanning System	2:1 Interlace
	Horizontal Sync. Frequency	<NTSC> 15.734KHz / <PAL>15.625KHz
	Shutter Control	<NTSC>1/60~1/100,000 sec <PAL>1/50~1/100,000 sec
	BNC Video Output	Composite video 1.0Vpp, 75 Ohm
	Auto Electronics Shutter	On
	Auto Gain Control	On
	Back Light Compensation	On
White Balance	ATW	
Infrared LED	Quantity	18pcs
	Radiant Distance	20M**
Power	Power Supply	DC 12V
	Power Consumption	3W
Lens	4.3mm Fixed Lens	
Weatherproof	IP 66	
Dimension	95(ø) * 55(H) mm	
Weight	0.5 kg	
Mounting	Surface Mount	
Operating Temperature	-10°C ~+60°C	

\* Specifications are subject to change without prior notice

\*\* Depending on Scene Reflection

## Specification - GKB 109

<b>GKB 109 Analog Camera</b>		
Video	Image Sensor	1/3" Sony CCD
	Number of Effective Pixels	NTSC: 510(H)×492(V) PAL: 500(H)×582(V)
	Resolution	420 TV Lines
	Min. Illumination	0.3 lx, F1.4 / 0.01 lx, F1.4
	Gamma	0.45
	S/N Ratio	More than 48dB
	Sync. Mode	Internal Sync.
	Scanning System	2:1 Interlace
	Horizontal Sync. Frequency	<NTSC> 15.734KHz / <PAL>15.625KHz
	Shutter Control	<NTSC>1/60~1/100,000 sec <PAL>1/50~1/100,000 sec
	BNC Video Output	Composite video 1.0Vpp, 75 Ohm
	Auto Electronics Shutter	On
	Auto Gain Control	On
Back Light Compensation	On	
White Balance	ATW	
Infrared LED	Quantity	18pcs
	Radiant Distance	20M**
Power	Power Supply	DC 12V
	Power Consumption	3W
Lens	4.3mm Fixed Lens	
Weatherproof	IP 66	
Dimension	95(ø) * 55(H) mm	
Weight	0.5 kg	
Mounting	Surface Mount	
Operating Temperature	-10°C ~+60°C	

\* Specifications are subject to change without prior notice

\*\* Depending on Scene Reflection.

# Warranty Policy

## **Warranty Period**

All GKB products include a one-year manufacturer's warranty from the date of purchase.

## **Inclusions and Exclusions**

GKB provides full warranty against manufacturing defects and will replace products immediately without additional fee or charge. This warranty does not cover defects caused by improper use, mishandling of the product, and/or regular wear and tear.

## **Charges**

GKB does not charge fees for product repair required during the warranty period and will pay half the total cost of shipment fees. If products are no longer in warranty, GKB will charge a fee for product repair and will not be responsible for shipment fees.

For detailed information on product warranties and warranty claim, please contact your local GKB distributor or agent. For GKB distributors and agents, please refer to distributor or agent contract for more information.



